



Electromechanical instability in semicrystalline polymers

Citation

Zhao, Xuanhe, and Zhigang Suo. 2009. "Electromechanical Instability in Semicrystalline Polymers." *Applied Physics Letters* 95 (3): 31904. <https://doi.org/10.1063/1.3186078>.

Permanent link

<http://nrs.harvard.edu/urn-3:HUL.InstRepos:41461293>

Terms of Use

This article was downloaded from Harvard University's DASH repository, and is made available under the terms and conditions applicable to Other Posted Material, as set forth at <http://nrs.harvard.edu/urn-3:HUL.InstRepos:dash.current.terms-of-use#LAA>

Share Your Story

The Harvard community has made this article openly available.
Please share how this access benefits you. [Submit a story](#).

[Accessibility](#)

Electromechanical instability in semicrystalline polymers

Xuanhe Zhao and Zhigang Suo^{a)}

School of Engineering and Applied Sciences, Harvard University, Cambridge, Massachusetts 02138, USA

(Received 7 June 2009; accepted 1 July 2009; published online 20 July 2009)

When a layer of a semicrystalline polymer is subject to a tensile force in its plane and a voltage through its thickness, the deformation of the layer is initially homogeneous, but it then localizes. The electromechanical instability sets in when the force and the voltage reach critical conditions. The critical conditions are determined in this paper and are related to the following two special cases: the Considère condition for the necking instability and the Stark–Garton condition for the pull-in instability. The general critical conditions show that a tensile force can markedly reduce the critical voltage. © 2009 American Institute of Physics. [DOI: 10.1063/1.3186078]

Semicrystalline polymers are widely used as dielectrics in cables, capacitors, and actuators.^{1–4} Such applications require that dielectrics sustain high voltages. A major mode of failure caused by the high voltages is the pull-in instability.^{5–9} Subject to a voltage, a layer of a polymer thins down, and the electric field increases. The positive feedback may lead to the pull-in instability upon reaching a critical voltage. In various applications, the layer is often subject to a combination of a voltage and a tensile force. Experiments have shown that the tensile force can substantially reduce the critical voltage.^{10–16}

This paper calculates the critical conditions for the electromechanical instability in a semicrystalline polymer subject to combined electric voltage and mechanical force. The general critical conditions recover the Stark–Garton condition for the pull-in instability⁵ and the Considère condition for the necking instability.^{5,17} Furthermore, the general critical conditions show that a tensile force can indeed reduce the critical voltage.

To focus on essential ideas, consider a model illustrated in Fig. 1. A layer of a polymer, thickness H and sides $L \times L$ in the undeformed state, is sandwiched between two compliant electrodes. The polymer is then subject to a voltage Φ through the thickness and a biaxial force P in the plane. The electromechanical instability typically sets in at a large deformation. At such a large deformation, the change in volume is typically small compared to the change in shape. Following a common practice, we assume that the polymer is incompressible. Consequently, when the thickness reduces to λH , the two sides stretch to $L/\sqrt{\lambda}$.

As illustrated in Fig. 2, the biaxial force P causes a biaxial stress of magnitude, $\sigma = P/(HL\sqrt{\lambda})$. Because the polymer is taken to be incompressible, superimposing a state of hydrostatic compression to the polymer does not change the state of deformation in the polymer. Consequently, the state of deformation in the polymer subject to the biaxial tension in the plane is the same as the state deformation in the polymer subject to a uniaxial compression through the thickness.

The voltage causes an electric field, $E = \Phi/(H\lambda)$. This electric field also causes the polymer to deform (Fig. 2). When the deformation is large, the polymer chains change configuration, but the electric polarization may be negligibly

affected by the large deformation. As a commonly adopted idealization, the dielectric behavior of the polymer is taken to be liquidlike, such that the permittivity ϵ is a constant unaffected by the deformation.¹⁸ For an incompressible dielectric with a constant permittivity, the effect of the electric field on deformation can be described by a compressive Maxwell stress, ϵE^2 .¹⁹

When the polymer is subject to a combination of biaxial force P and voltage Φ , the state of deformation in the polymer is the same as that in the polymer subject to a uniaxial compressive stress of magnitude $\sigma + \epsilon E^2$. The natural strain in the thickness direction is $\ln \lambda$. We will describe the mechanical behavior of the polymer by using a power-law model, where the uniaxial stress is taken to scale with the natural strain to some power.^{9,17} Consequently, under the combined voltage and force, the effective stress relates to the stretch as

$$\sigma + \epsilon E^2 = K(-\ln \lambda)^N, \quad (1)$$

where N and K are parameters used to fit experimentally recorded stress-strain relation. The parameter N measures how steeply the polymer strain-hardens. Stark and Garton assumed the linear elastic behavior, $N=1$.⁵ However, the stress-strain relations for semicrystalline polymers significantly deviate from the linear elastic behavior, with more realistic values being $N=0.1–0.6$. The parameter K measures the yield strength of the polymer and is much smaller than the elastic modulus of the polymer. Consequently, the Stark–Garton model in its original form significantly overestimates the critical voltage. The modified model using the power-law adequately describes the experimentally measured critical voltage.⁹

In an analysis of stability, it is essential to specify the variables independently controlled in experiments. In this paper, we assume that experiments independently vary the

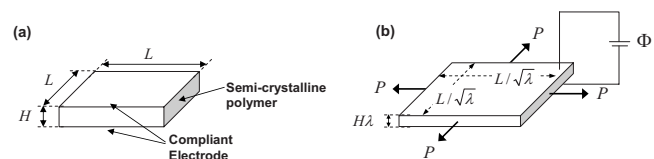


FIG. 1. (a) A layer of a semicrystalline polymer in the undeformed state. (b) The polymer deforms under a voltage and a biaxial force P .

^{a)}Electronic mail: suo@seas.harvard.edu.

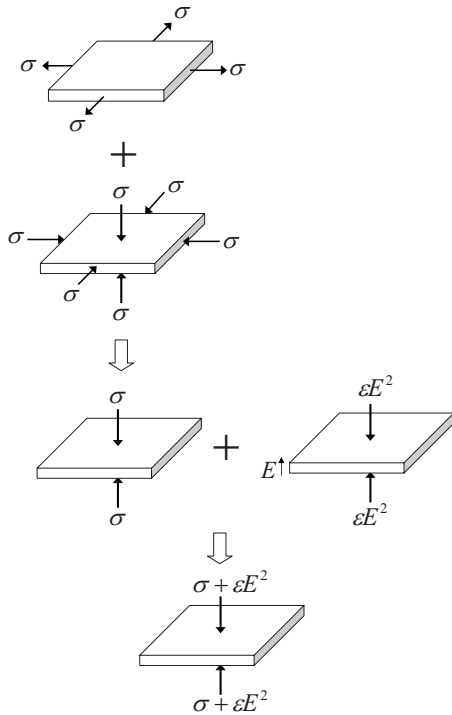


FIG. 2. For an incompressible dielectric, the state of strain caused by a biaxial force and a voltage is the same as that caused by a uniaxial compressive stress of magnitude $\sigma + \epsilon E^2$.

force P and the voltage Φ . In terms of the independent variables, Eq. (1) becomes

$$\frac{P}{HL\sqrt{\lambda}} + \epsilon \left(\frac{\Phi}{H\lambda} \right)^2 = K(-\ln \lambda)^N. \tag{2}$$

The equation embodies the two following competing trends as the polymer deforms: material hardening and geometric softening. Material hardening results from the monotonically increasing stress-strain curve and is described by the power-law model $K(-\ln \lambda)^N$. Geometric softening results from the thinning of the layer and is described by the stretch appearing in the denominators of the two terms on the left-hand side of Eq. (2).

Figure 3(a) represents Eq. (2) by plotting the normalized force as a function of the stretch at several fixed values of the voltage. The overall shape of the curves reflects the competition between material hardening and geometric softening. When deformation is small, $\lambda \approx 1$, material hardening prevails, and the force must increase to cause further deformation. When deformation is large, $\lambda \ll 1$, geometric softening prevails, and the force decreases to cause further deformation. For a fixed value of the voltage, as the polymer de-

forms, the force attains a maximum, corresponding to the critical condition for the instability to set in. For the special case that the polymer is subject to a biaxial tensile force P in the absence of voltage, $\Phi=0$, Eq. (2) reduces to $P = KHL(-\ln \lambda)^N \lambda^{1/2}$. Maximizing the function $P(\lambda)$, we obtain the critical stretch $\lambda_c = \exp(-2N)$ and the critical stress $\sigma_c = K(2N)^N$. This special case recovers the Considère condition for the necking instability.¹⁷

Alternatively, Fig. 3(b) represents Eq. (2) by plotting the normalized voltage as a function of the stretch at several fixed values of the force. The overall shape of the curves also reflects the competition between material hardening and geometric softening. For the special case that the polymer is subject to the voltage Φ in the absence of the force, $P=0$, Eq. (2) reduces to $\Phi = H\sqrt{K/\epsilon}(-\ln \lambda)^{N/2} \lambda^2$. Maximizing the function $\Phi(\lambda)$, we obtain the critical stretch $\lambda_c = \exp(-N/2)$ and the critical electric field $E_c = \sqrt{K/\epsilon}(N/2)^{N/2}$. This special case recovers the modified Stark–Garton condition for the pull-in instability.⁹

Observe that the necking instability sets in at the critical stretch $\lambda_c = \exp(-2N)$, and the pull-in instability sets in at the critical stretch $\lambda_c = \exp(-N/2)$. That is, the necking instability requires more deformation than the pull-in instability. This difference is understood by inspecting the two terms on the left-hand side of Eq. (2). The reduction in the thickness of the layer from H to λH causes geometric softening, but λ enters the two terms by different powers: the geometric softening impacts more on the voltage than on the force.

In general, when P is fixed at any value, the voltage is a function $\Phi(\lambda)$ as determined by Eq. (2). Setting $d\Phi(\lambda)/d\lambda = 0$ at a fixed value of P , we obtain that

$$\frac{P}{HL\sqrt{\lambda}} + 4\epsilon \left(\frac{\Phi}{H\lambda} \right)^2 = 2NK(-\ln \lambda)^{N-1}. \tag{3}$$

This equation is also obtained by regarding Eq. (2) as a function $P(\lambda)$ when Φ is fixed at any value, and then setting $dP(\lambda)/d\lambda = 0$.

Equations (2) and (3) together determine the critical conditions for the electromechanical instability in a power-law dielectric subject to combined tensile force and voltage. Under the critical conditions, once any one of the three parameters, λ , P , and Φ , are prescribed, the other two can be determined by simultaneously solving Eqs. (2) and (3). Figure 4 plots the critical conditions for the electromechanical instability on the plane with the force and the voltage as coordinates. The critical voltage is small when the tensile force is large. This trend agrees with experimental observations.^{10–16}

Recall that the stress and the electric field are related to the force and the voltage. From Eqs. (2) and (3) we can solve

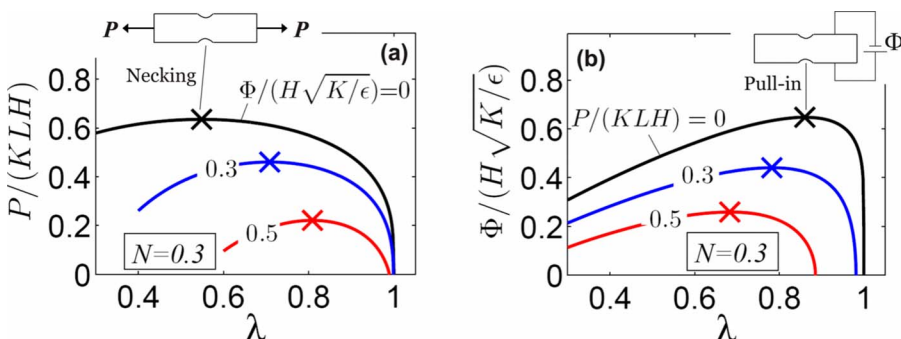


FIG. 3. (Color online) (a) The force as a function of the stretch for several fixed values of the voltage. (b) The voltage as a function of the stretch for several fixed values of the force.

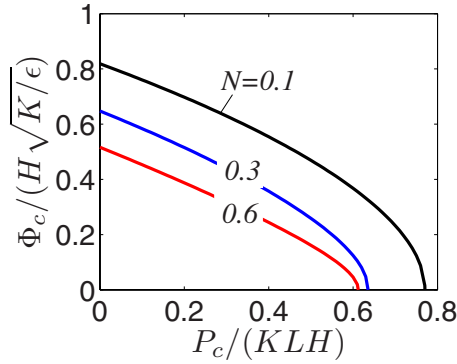


FIG. 4. (Color online) On the plane with the force and the voltage as coordinates, the critical conditions for the electromechanical instability are plotted for several values of the hardening exponent.

the stress and the electric field in terms of λ , namely,

$$\frac{\sigma}{K} = \frac{4}{3}(-\ln \lambda)^N - \frac{2N}{3}(-\ln \lambda)^{N-1}, \quad (4)$$

$$\frac{\epsilon E^2}{K} = -\frac{1}{3}(-\ln \lambda)^N + \frac{2N}{3}(-\ln \lambda)^{N-1}. \quad (5)$$

In terms of the parameters σ, E, λ , these two equations express the critical conditions under which the electromechanical instability sets in. The critical conditions (4) and (5) generalize both the Considère condition and the Stark-Garton condition. These equations are plotted in Fig. 5. The

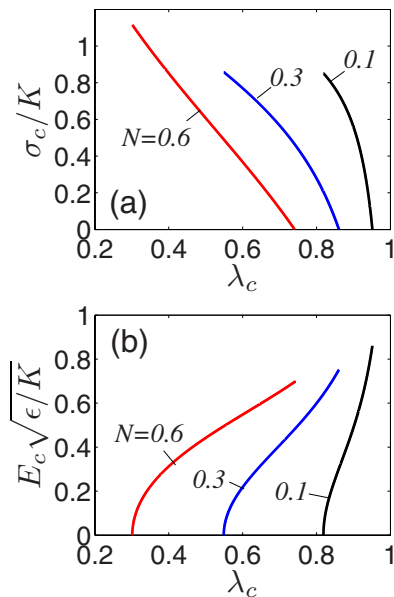


FIG. 5. (Color online) (a) The critical stress as a function of the critical stretch for several values of the hardening exponent. (b) The critical electric field as a function of the critical stretch for several values of the hardening exponent.

electromechanical instability precedes electrical breakdown when the critical electric field determined in Fig. 5 is lower than the electric breakdown strength of the polymer. In the above, we have assumed that the applied force is tensile. The results in Eqs. (4) and (5), however, are formally applicable when the applied force is compressive. So long as the compressive force does not cause the layer to buckle, the compression will increase the critical voltage.

We have calculated the critical conditions for the electromechanical instability of a semicrystalline polymer subject to a combination of mechanical force and electric voltage. To focus on essential ideas, we have restricted to the biaxial force and power-law material model. The method, however, can be extended to other loading conditions²⁰ and other material models.²¹ While the model predicts the same trend as reported in the experimental literature,^{10–16} we hope that more complete experimental data will become available to ascertain the model.

This work is supported by the National Science Foundation through a grant on Soft Active Materials (0800161). X.Z. acknowledges the support of the Founder's Prize, through the American Academy of Mechanics, sponsored by the Robert M. and Mary Haythornthwaite Foundation.

¹T. Takahashi, H. Ohtsuka, H. Takehana, and T. Niwa, *IEEE Trans. Power Appar. Syst.* **PAS-104**, 1945 (1985).

²M. Rabuffi and G. Picci, *IEEE Trans. Plasma Sci.* **30**, 1939 (2002).

³Q. M. Zhang, V. Bharti, and X. Zhao, *Science* **280**, 2101 (1998).

⁴Q. M. Zhang, H. F. Li, M. Poh, F. Xia, Z. Y. Cheng, H. S. Xu, and C. Huang, *Nature (London)* **419**, 284 (2002).

⁵K. H. Stark and C. G. Garton, *Nature (London)* **176**, 1225 (1955).

⁶J. Blok and D. G. LeGrand, *J. Appl. Phys.* **40**, 288 (1969).

⁷H. R. Zeller and W. R. Schneider, *J. Appl. Phys.* **56**, 455 (1984).

⁸J. C. Fothergill, *IEEE Trans. Electr. Insul.* **26**, 1124 (1991).

⁹X. Zhou, X. H. Zhao, Z. G. Suo, C. Zou, J. Runt, S. Liu, S. H. Zhang, and Q. M. Zhang, *Appl. Phys. Lett.* **94**, 3 (2009).

¹⁰S. Mita and K. Yahagi, *Jpn. J. Appl. Phys.* **14**, 197 (1975).

¹¹C. H. Park, T. Kaneko, M. Hara, and M. Akazaki, *IEEE Trans. Electr. Insul.* **17**, 234 (1982).

¹²P. Guerin, Hoang-the-Giam, B. Ai, P. Destruel, L. Deschamps, and J. Perret, *J. Appl. Phys.* **57**, 4805 (1985).

¹³E. Ilstad and S. T. Hagen, in Proceedings of the IEEE International Symposium on Electrical Insulation, Baltimore, MD, 7–10 June 1992 (unpublished), Vol. 89, pp. 525–531.

¹⁴E. David, J. L. Parpal, and J. P. Crine, in Proceedings of the IEEE International Symposium on Electrical Insulation, Pittsburgh, PA, 5–8 June 1994 (unpublished), pp. 170–173.

¹⁵N. Amyot, E. David, S. Y. Lee, and I. H. Lee, *IEEE Trans. Dielectr. Electr. Insul.* **9**, 458 (2002).

¹⁶F. H. Zheng, Y. W. Zhang, C. Xiao, J. F. Xia, and Z. L. An, *IEEE Trans. Dielectr. Electr. Insul.* **15**, 965 (2008).

¹⁷J. W. Hutchinson and K. W. Neale, *Proceedings of the IUTAM Symposium on Finite Elasticity*, Bethlehem, PA, 11–15 August 1980 (Martinus Nijhoff, London, 1979), p. 237.

¹⁸X. H. Zhao, W. Hong, and Z. G. Suo, *Phys. Rev. B* **76**, 134113 (2007).

¹⁹R. Pelrine, R. Kornbluh, Q. B. Pei, and J. Joseph, *Science* **287**, 836 (2000).

²⁰X. H. Zhao and Z. G. Suo, *Appl. Phys. Lett.* **91**, 061921 (2007).

²¹X. H. Zhao and Z. G. Suo, *J. Appl. Phys.* **104**, 123530 (2008).